

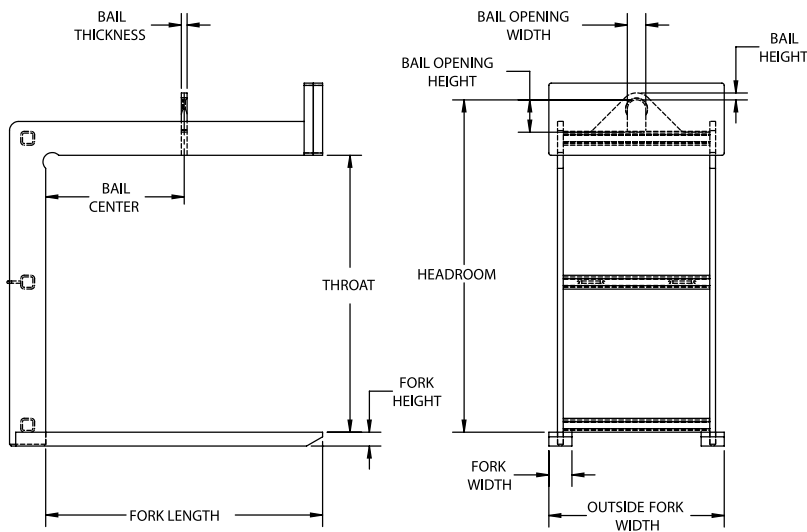
HPL FIXED FORK PALLET LIFTER

FEATURES

- This style of lifter is designed to lift and carry palletized loads efficiently with an overhead crane.
- Counter balanced to hang level when unloaded.
- Easily maintained low headroom design.
- The bail is a lower headroom design and is positioned to avoid side loading the crane hook.
- Engineered and manufactured to ASME B30.20 & BTH-1 Design Category B Service Class 2.
- 100% of ALL Harrington Lifting Beams are proof-tested to 125% capacity and certificates supplied at no additional charge.
- Made in USA.

OPTIONS

- Larger throat openings
- Greater outside fork widths
- Additional sizes and capacities available



Model #	Capacity (US Tons)*	Dimensions (Inches)											Weight (Lbs.)
		Fork Length	Fork Width	Fork Height	Outside Fork Width	Bail Center	Throat Opening Height	Headroom	Bail Height	Bail Opening Width	Bail Opening Height	Bail Thickness	
HPL-1-36	1	36	2	2	25	18	48	57.5	0.88	3	5	0.75	425
HPL-1-42	1	42	2	2	25	21	48	57.5	0.88	3	5	0.75	450
HPL-1-48	1	48	2	2	25	24	48	58.5	0.88	3	5	0.75	540
HPL-1.5-36	1.5	36	3	2	25	18	48	58.5	0.88	3	5	0.75	565
HPL-1.5-42	1.5	42	3	2	25	21	48	58.5	0.88	3	5	0.75	630
HPL-1.5-48	1.5	48	3	2	25	24	48	58.5	0.88	3	5	0.75	665
HPL-2-36	2	36	3	2	25	18	48	59.5	0.88	3	5	0.75	650
HPL-2-42	2	42	4	2	25	21	48	59.5	0.88	3	5	0.75	780
HPL-2-48	2	48	4	2	25	24	48	59.5	0.88	3	5	0.75	910
HPL-3-42	3	42	4.5	2.5	25	21	48	61.5	1.25	3	5	1	1110
HPL-3-48	3	48	4.5	2.5	27	24	48	61.5	1.25	3	5	1	1195
HPL-3-54	3	54	4.5	2.5	30	27	48	61.5	1.25	3	5	1	1405
HPL-4-48	4	48	5	3	27	24	48	63.5	1.25	3	5	1	1705
HPL-4-60	4	60	5	3	30	30	60	75.5	1.25	3	5	1	2020
HPL-5-48	5	48	5	3	30	24	48	63.5	1.5	4	7	1.25	1730
HPL-5-60	5	60	5	3	38	30	60	75.5	1.5	4	7	1.25	2035

NOTE: Additional 2"-3" clearance is recommended above the load for ease of loading and unloading the pallet lifter. * 1 US Ton = 2,000 Lbs

