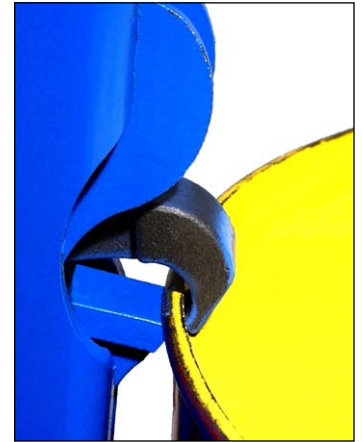


**Lift and Stack an Upright Drum**

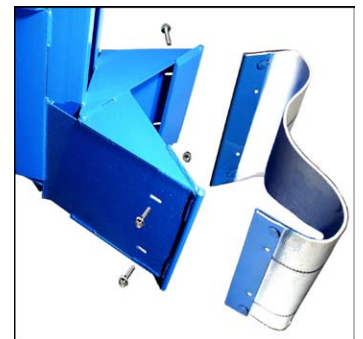
- Stack a Drum up to 101" (257 cm) high
- Grips Top Rim of Steel, Plastic or Fiber Drum
- Handles Upright Drum Only
- You control the lifting height
- Ergonomic Power-Lift Models
- Capacity: 800 Lb. (363 kg)

*MORSPEED 1500*<sup>™</sup> jaws handle virtually any rimmed drum... even a drum with straight wall or deformed ribs



Wide *MORSPEED 1500*<sup>™</sup> jaws, are contoured to securely grasp drum rim. Encased mechanism provides precise, reliable, automatic drum gripping.

**Option**



**Belt Kit Option # 2523-P** puts a shock absorbent surface in front of the steel backrest of the *MORSPEED 1500*<sup>™</sup> to protect the finish on your drum. It is easy to install using 4 bolts provided.



Model 522 Stacks a Drum up to 101" (257 cm) high

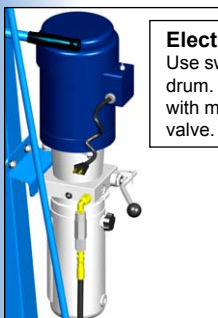
Model 512 Stacks a Drum up to 45" (114 cm) high

**Handle Various Drums**

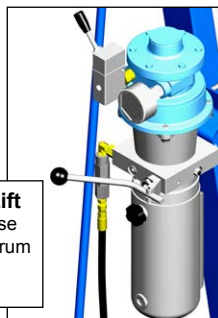
- Steel drum with closed head, or with removable top with clamp ring on and secured
- Rimmed plastic drum with non-removable top, or with lid on and secured
- Fiber drum with metal clamp ring closure secured
- Even works with straight walled or damaged drums
- Requires 24" (61 cm) minimum drum height, but will work with any diameter drum
- Requires 75 Lb. (34 kg) minimum drum weight to actuate jaws

Contact Morse for advice on suitability of unusual drums or rim shapes.

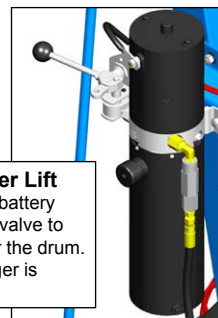
**Ergonomic Power Lift Models**



**Electric Power Lift**  
Use switch to raise the drum. Lower the drum with manual release valve.



**Air Motor Power Lift**  
Use on/off valve to raise the drum. Lower the drum with manual release valve.



**Battery Power Lift**  
Self contained battery power-lift. Use valve to raise and lower the drum. Separate charger is included.

MADE  
IN  
USA

Model Numbers						Export Crate		
Model #	Maximum Lift Height	Lift Function	Motor Control	Domestic Ship Weight	Domestic Ship Dimensions	Crate #	Crate Dimensions	Crate Weight
512	45" (114 cm)	Manual Hand Pump	N/A	625 Lb. (283 kg)	L74" x W48" H83" (188 x 122 x 211 cm)	3004X-P	L63" x W46" x H85" (160 x 117 x 216 cm)	330 Lb. (150 kg)
512-120		AC Motor *	Switch, Cord, Plug	620 Lb. (281 kg)				
512-124		Air Motor, Vane Type	On/Off Valve	606 Lb. (275 kg)				
512-125		12V DC **	Built-in	610 Lb. (277 kg)				
522	101" (257 cm)	Manual Hand Pump	N/A	825 Lb. (374 kg)	L74" x W48" H82" (188 x 122 x 208 cm)	3735X-P	L68" x W47" x H87" (173 x 119 x 221 cm)	330 Lb. (150 kg)
522-120		AC Motor *	Switch, Cord, Plug	820 Lb. (372 kg)				
522-124		Air Motor, Vane Type	On/Off Valve	785 Lb. (356 kg)				
522-125		12V DC **	Built-in	810 Lb. (367 kg)				

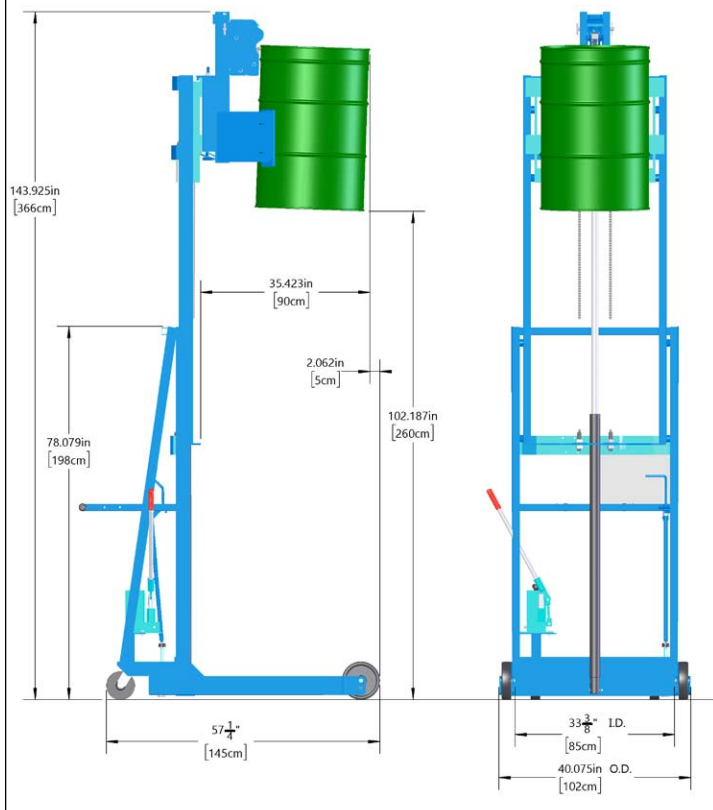
\* Standard AC motors are TEFC, 1HP for 115V AC, 60Hz.

\*\* 12V DC power includes battery and 110V AC charger.

### Dimensions

#### 522 Series

Two-Stage models lift an upright drum up to 101" (257 cm) high, and retract to a minimum height of 78" (198 cm).  
Turning Radius: 68.25" (174 cm)



#### 512 Series

Single-Stage lift an upright drum up to 45" (114 cm) high, and retract to a minimum of height of 78" (198 cm).  
Turning Radius: 61" (155 cm)

